



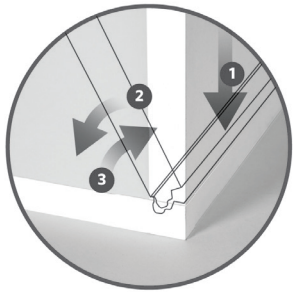
**FOR FURNITURE**

**TOOLLESS LOCKING  
TECHNOLOGY**

The assembly of flat-pack furniture is now extremely fast, easy and intuitive with the **revolutionary Uniclic® for Furniture technology**. Unique tongue and groove profiles allow angle-in or snap-in assembly of furniture, **without any tools, inserts, fittings, screws or glue**.

The click-together profiles are milled across the full width of board edges, creating **very strong joints for cabinets, drawers and other furniture**. Since no additional fittings are required, this technology has a reduced ecological footprint.

## DO NOT SCREW UP - USE UNICLIC FOR FURNITURE



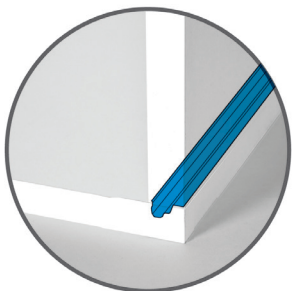
As easy as 1-2-3

Installing Uniclic for Furniture is child's play. The furniture panels are simply **angled and clicked** into each other in three easy and smooth motions. No need for lengthy complicated installation manuals, **just click it**.



High-end appearance

Esthetics are key: the click connections are milled into the material itself so that **no connection or fixation points** are visible. Click furniture assembly provides a **high-end appearance**.



Sturdy connection

The load is spread along the entire connection surface, which provides a steadier and **stable connection**. Uniclic for Furniture passed FIRA and/or BIFMA tests for **rigidity and solidity**.



## Reform





#### TOOLLESS ASSEMBLY & DISASSEMBLY

Say goodbye to assembly and disassembly tools: with Uniclic for furniture your hands are all you need.

This click furniture innovation allows toolless assembly, even without nails, screws or glue. Furthermore, it significantly **reduces preparation, assembly times and the possibility of damage or mistakes.**

## SUSTAINABLE INNOVATION

- All-in-one system: profile is milled directly into the panel
- No plastic inserts, screws or tools needed
- Recyclable material
- Easy to de-install and re-install without damage
- Efficient transportation: flat pack saves space

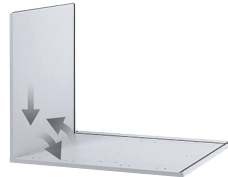
## DIVERSE DESIGN POSSIBILITIES

- Perfect for connections of different angles
- For cabinets, cupboards, wardrobes, drawers, tables,...
- Ideal for built in kitchen cupboards or bathroom cabinets

## INSTALLS IN JUST 30 SECONDS



0:00



0:06



0:15



0:24



0:30

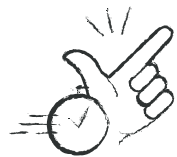


## EASY PRODUCTION

- Suitable for all materials that can be machined with a profile such as particle board, MDF, HDF, solid, engineered and plywood
- Compatible with 3-axis to 5-axis CNC machines, single- or double-sided profiling (DET) or edge-banding machines
- The profile is milled directly into the panels and can be milled in a only one machine, saving factory space, time and costs



**EGGER**



FAST & INTUITIVE INSTALLATION



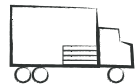
STURDY CONNECTION



SIMPLE ASSEMBLY GUIDES



INVISIBLE CONNECTIONS



EASY TRANSPORT  
WITH FLAT-PACK



LOWER ECOLOGICAL  
FOOTPRINT



TONGUE & GROOVE  
TOOL-LESS CONNECTION



EASY DISASSEMBLY  
FOR TRANSPORT & REUSE

**UNILIN** TECHNOLOGIES  
FOR SMART LIVING

**Interested in this innovative technology? Contact us to become a licensed partner!**

Vredestraat 57, 8790 Waregem (Belgium) | +32 (0)56 67 56 67 | [info.technologies@unilin.com](mailto:info.technologies@unilin.com) | [www.unilintechnologies.com](http://www.unilintechnologies.com)



**More info  
and videos**